

SITE AT PLZEŇSKÁ ST.

MODERN GREEN BUILDINGS FOR RESIDENTS, WITH HIGH-QUALITY PUBLIC SPACES



CONSTRUCTION POTENTIAL

The total unbuilt area: 10 000 m².

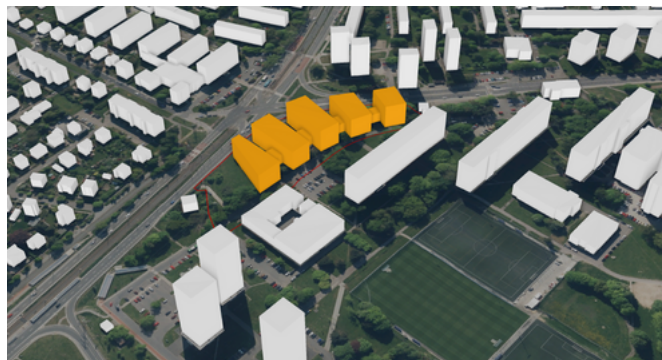
A building with an area of 2 000 – 3 000 m² can be built on the site.

Estimate floor area: 40 000 m².

EXPLOIT THE POTENTIAL OF THIS LARGE SITE

The City of Ostrava is offering this site located in **the most populous municipal district** (Ostrava-Jih). The site is bordered by greenery and buildings, and it is close to the Ostrava-Jih municipal district authority, a **major road junction** (Plzeňská St. x Horní St.), and the Bělský Les forest park – Ostrava's largest area of natural parkland.

The site is zoned for construction. In the future, the section of Horní St. between this location and the Ostrava-Jih district's main square will be redeveloped to create an **urban boulevard** that will provide a pleasant environment, with rows of trees separating the road from new cycle routes. Nearby is a newly built residential complex on Pavlovova St., with 60 apartments.



 invest@ostrava.cz

 [@enjoyostrava](https://www.instagram.com/enjoyostrava)

 [@Ostrava - oficiální profil](https://www.linkedin.com/company/Ostrava)



OSTRAVA!!!
investinostrava.cz